



Weighing Technology

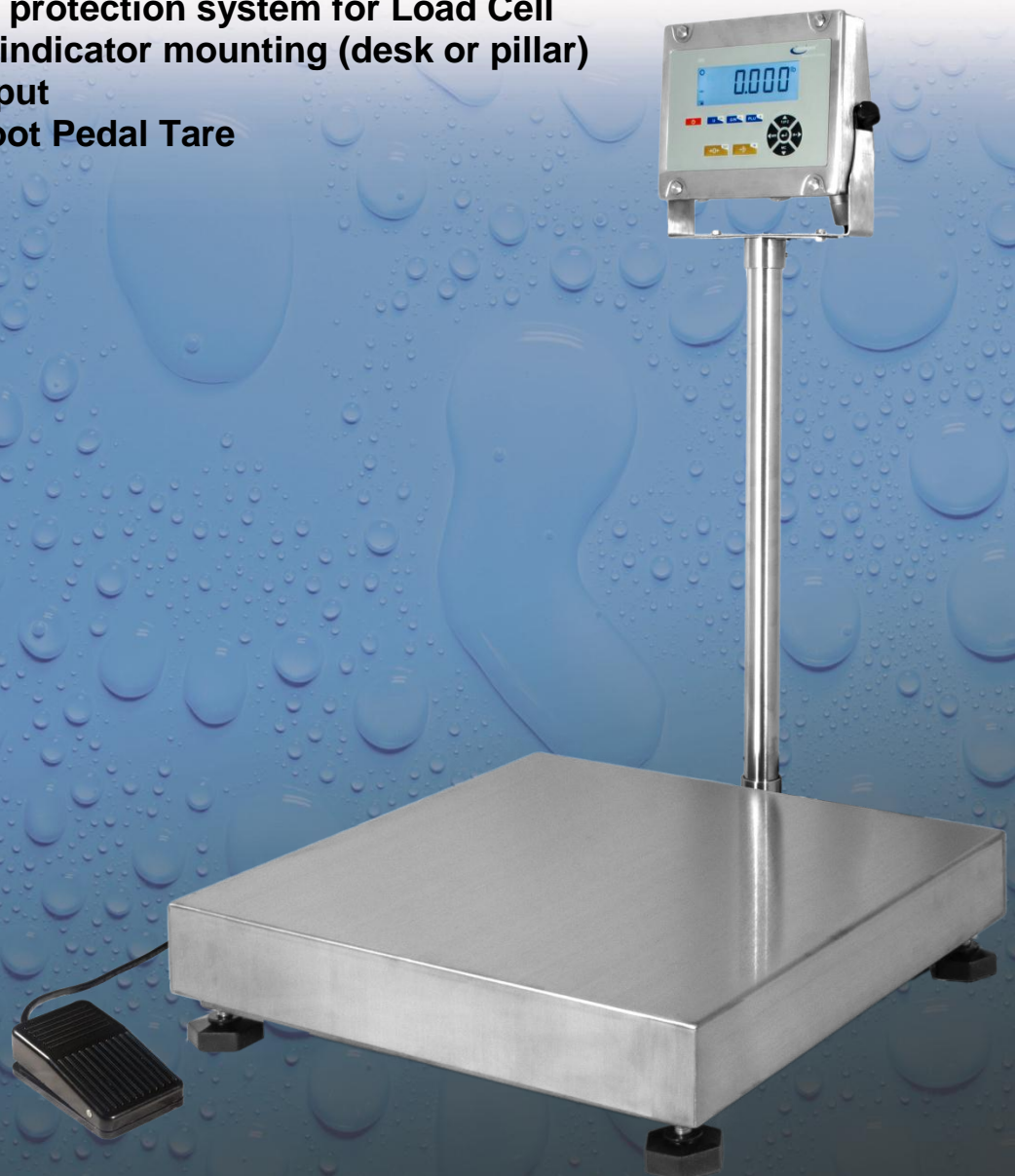
A Higher Level of Precision...A Higher Level of Performance

TitanH™

SERIES

Titan™ Bench Scale

- Stainless Steel Platter and Column
- Rechargeable Battery
- HI-LO-GO
- Washdown
- Waterproof protection system for Load Cell
- Reversible indicator mounting (desk or pillar)
- RS 232 output
- Optional Foot Pedal Tare



Manufactured for Intelligent Weighing Technology, Inc. in an ISO 9001 certified facility

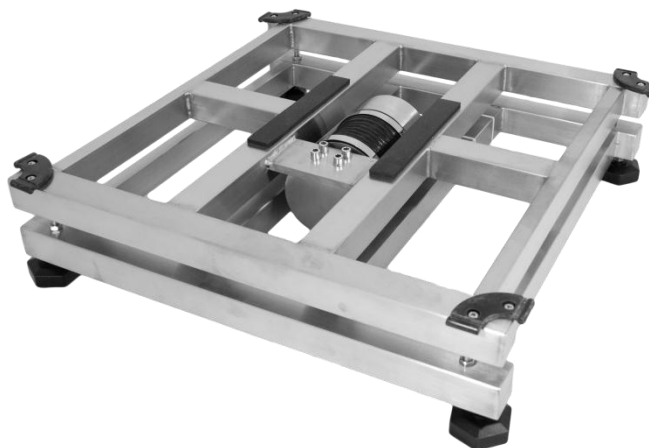
TitanH™

SERIES

Bench Scale

Model	TitanH 120-16	TitanH 300-16	TitanH 120-24	TitanH 300-24	TitanH 600-24
Capacity	120 lb / 60 kg	300 lb / 150 kg	120 lb / 60 kg	300 lb / 150 kg	600 lb / 300 kg
Readability	0.02 lb / 10 g	0.05 lb / 20 g	0.02 lb / 10 g	0.05 lb / 20 g	0.1 lb / 50 g
Weighing Units	lb, kg, oz				
Functions	Hi-Lo-Go, accumulation, peak hold				
Tare Range	Full capacity by subtraction				
Power Source	AC/DC adaptor 12 VDC and rechargeable battery				
Construction	Stainless steel indicator, platter and base with stainless steel protection system				
Display	1" high backlit display				
Platform Size (W x D x H)	16 x 16 x 4"		24 x 24 x 5.5"		
Dimensions (W x D x H)	16 x 16 x 35"		24 x 28 x 36"		
Operating Environment	14 ° F to 104 ° F (-10 ° C to 40 ° C)				
Connectivity	RS232				
Net Weight	30 lb		55 lb		
Shipping Weight	34 lb (28 x 23 x 6")		61.7 lb (37 x 29 x 7")		
Options	Printer, foot pedal tare				

Features	Benefits
Stainless steel construction	Easy to clean for food processing or harsh environments
Heavy duty construction	Will withstand harsh industrial operation
Sealed electronics	Improved water and dust resistance
Reads in lb, kg and oz	Flexibility of operation
Built in rechargeable battery	Portability
Zero tracking	Ensures you always start weighing at zero
Password protected calibration	Ensures only authorized personnel are able to adjust the scale
Hi-Lo-Go function	Great for checkweighing and sizing



Weighing Technology

Intelligent Weighing Technology, Inc.

www.intelligentwt.com

Rev: TitanH 06/12